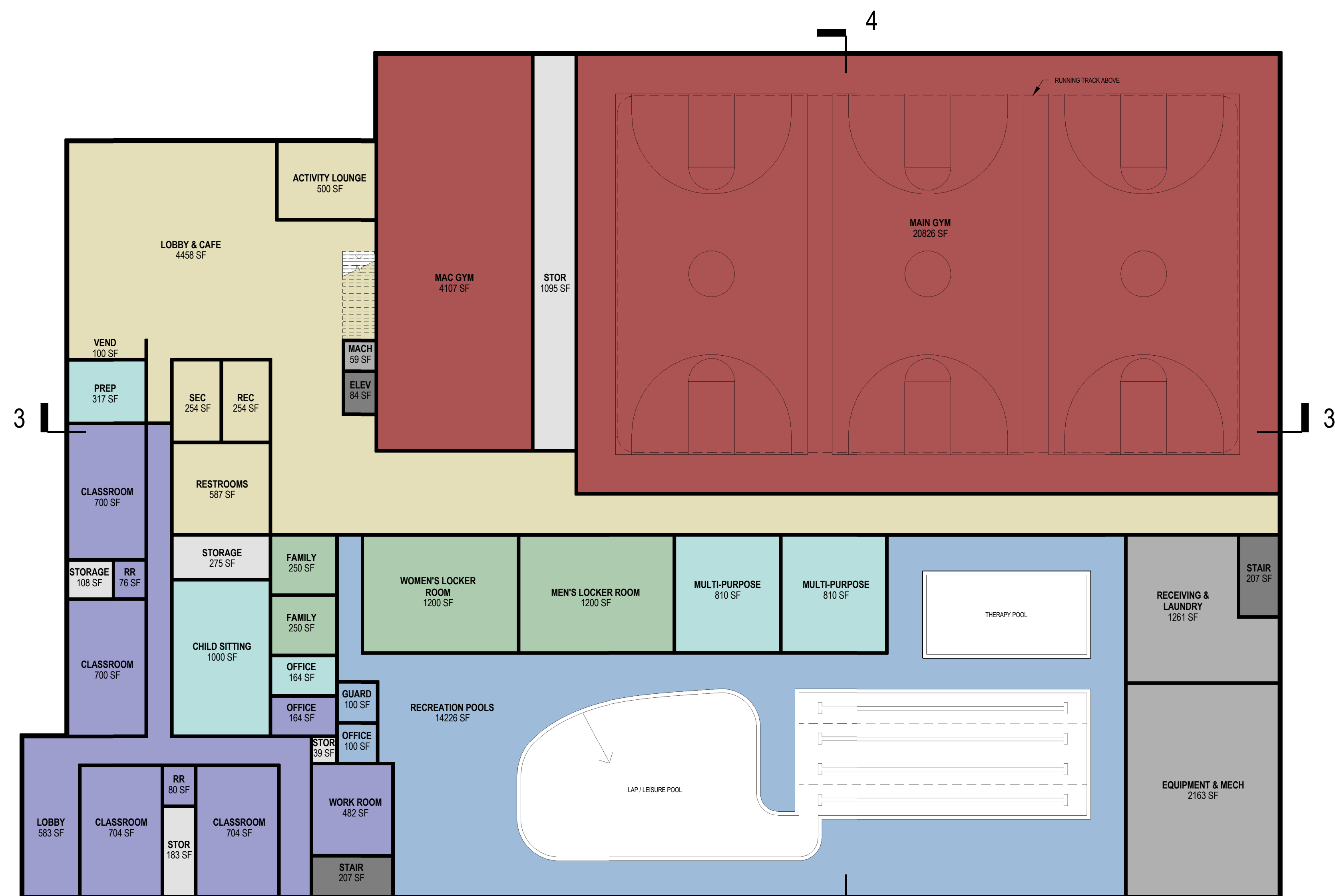
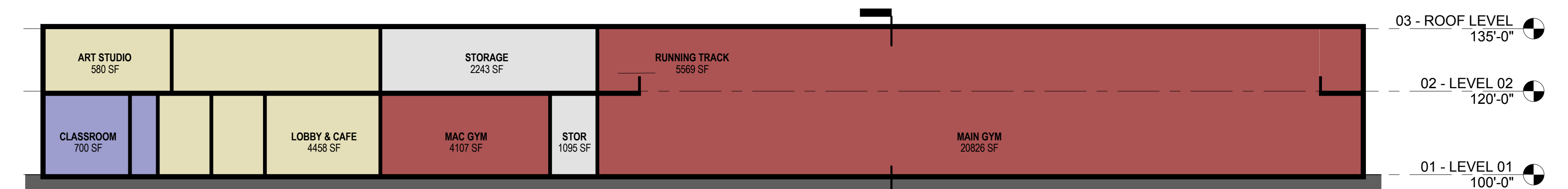


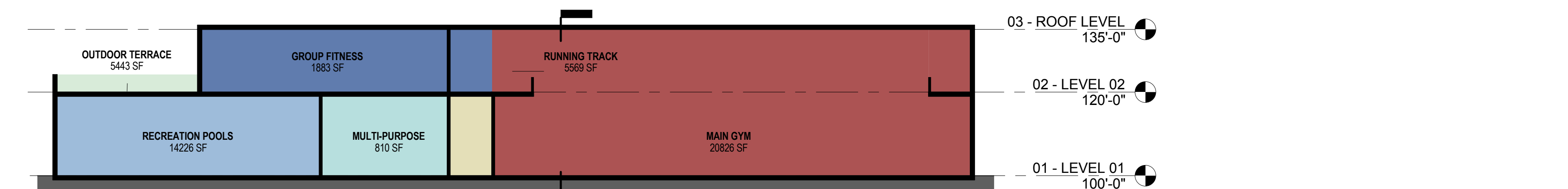
2 02 - PLANNING STRATEGY C - LEVEL 02
1" = 20'-0"



1 01 - PLANNING STRATEGY C - LEVEL 01
1" = 20'-0"



3 PLANNING STRATEGY C - SECTION 01
1" = 20'-0"



4 PLANNING STRATEGY C - SECTION 02
1" = 20'-0"

112,300 SF = APPROXIMATE GROSS BUILDING AREA