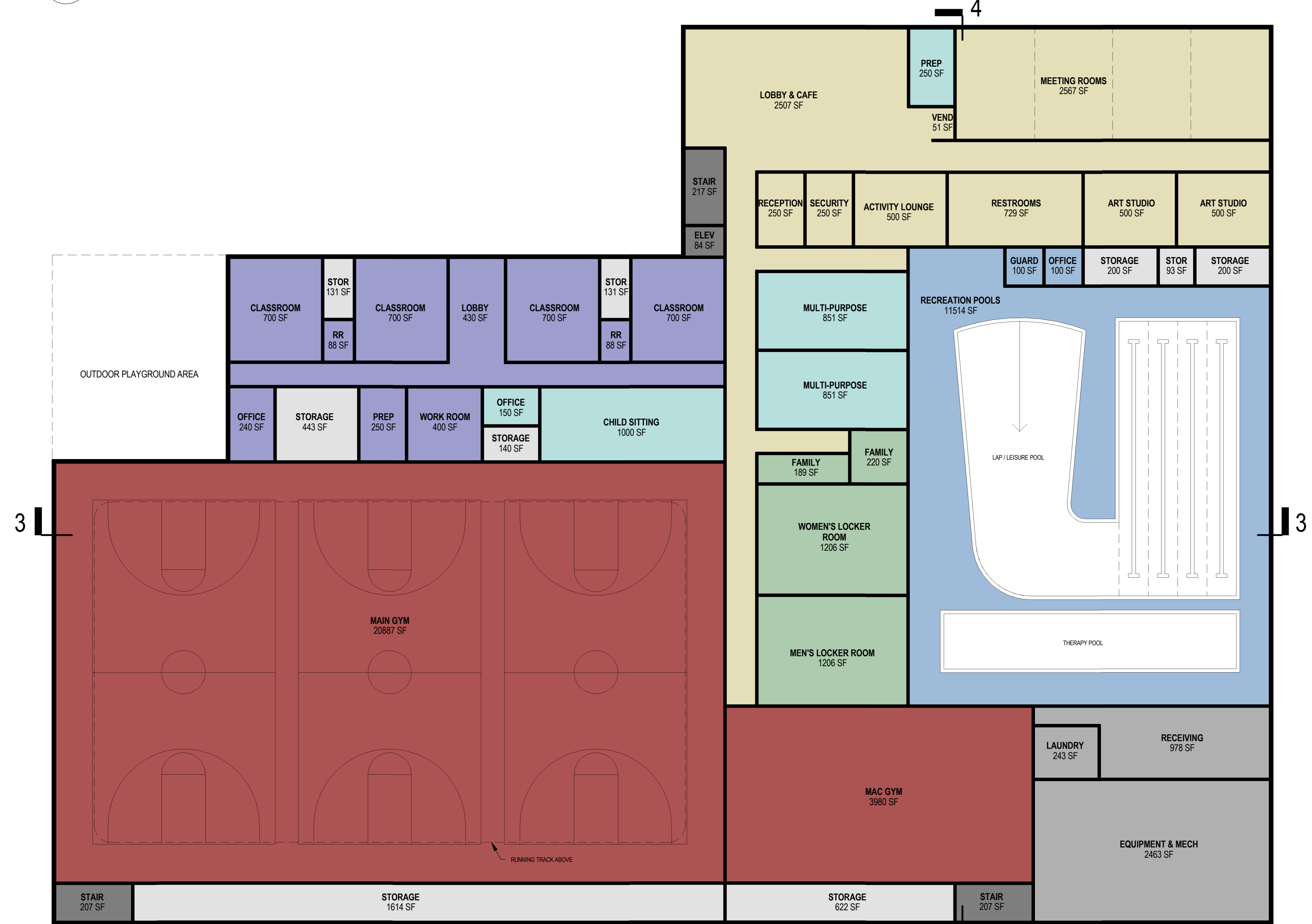
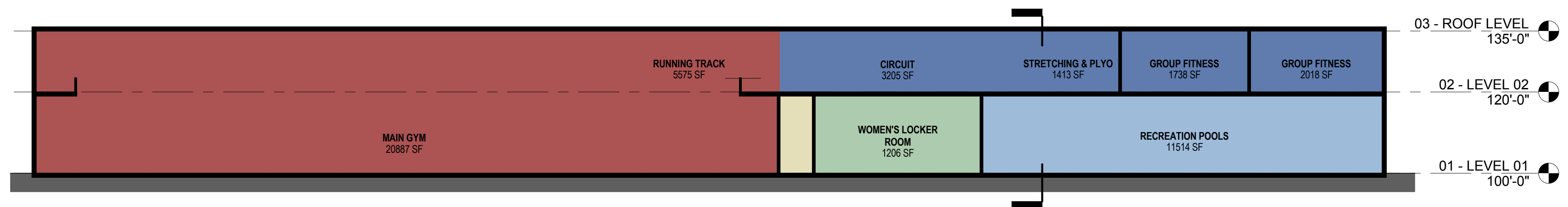


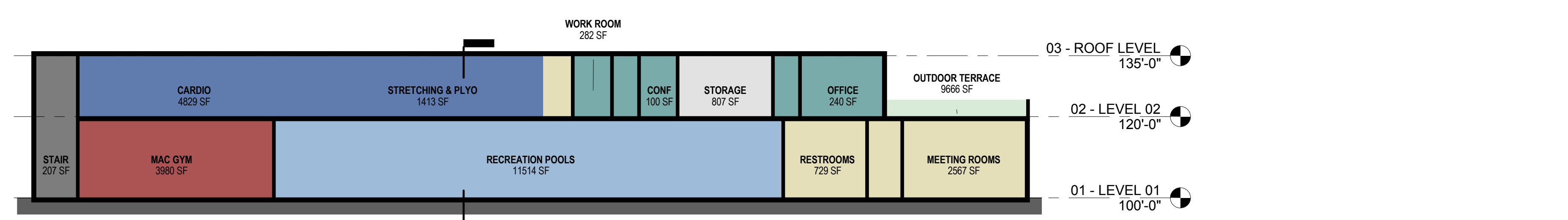
1 02 - PLANNING STRATEGY A - LEVEL 02
1" = 20'-0"



2 01 - PLANNING STRATEGY A - LEVEL 01
1" = 20'-0"



3 PLANNING STRATEGY A - SECTION 01
1" = 20'-0"



4 PLANNING STRATEGY A - SECTION 02
1" = 20'-0"

106,000 SF = APPROXIMATE GROSS BUILDING AREA